

Nipomo's



# www.SundaleManor.com

LOTS AND HOMES AVAILABLE . . . ON SUNDALE WAY

## Seven 2.25 Acre Estate Homesites

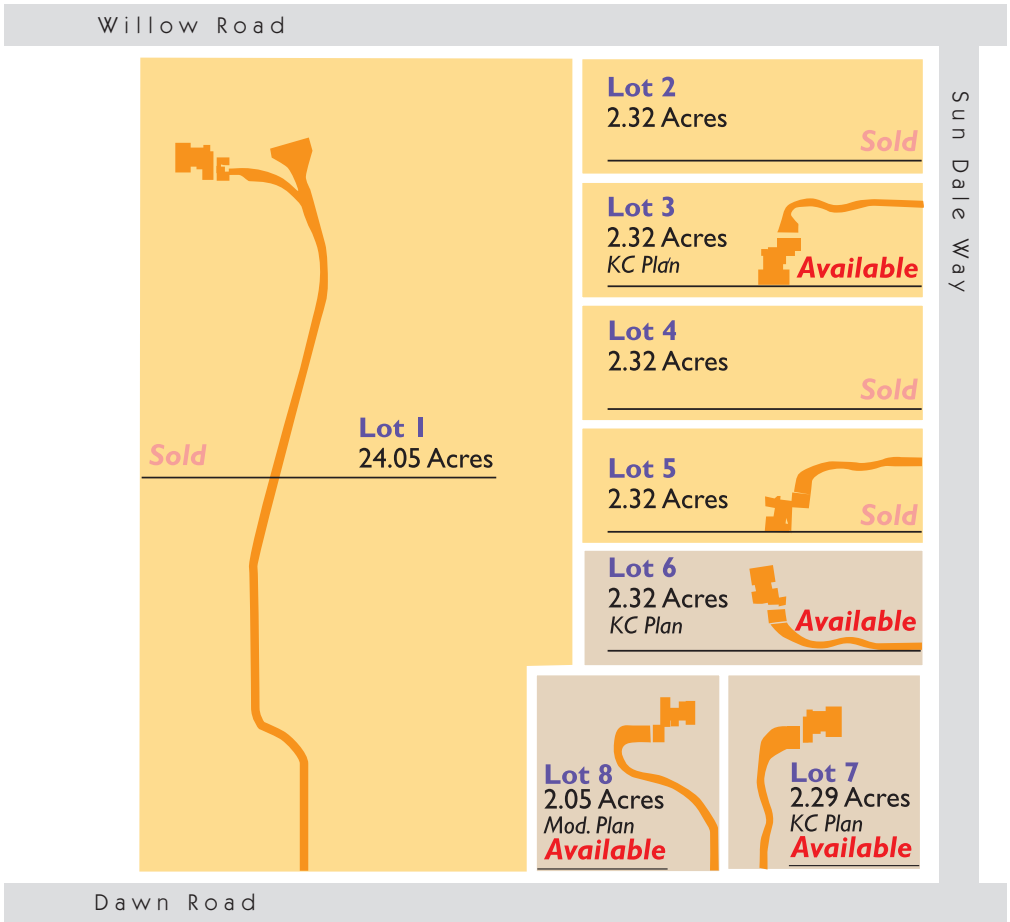
Adjacent to  
Blacklake  
Village and  
the Woodlands  
Golf Resort  
Communities . . .  
Call for pricing!



For sales information contact:

**Kathy Curtis 805.440.8641** Builder reserves the right to make changes to this list.

INFORMATION HEREIN DEEMED RELIABLE BUT NOT GUARANTEED. VERIFY INDEPENDENTLY. SOME AMENITIES MAY VARY.



### ***Lots are Ready for Building!***

Parcels are served by an on-site water company, natural gas, phone and cable ... utilities are placed under ground to the property corner ... Each parcel has a building envelope including a certified building pad for foundation construction. The parcels allow for secondary dwelling, barn or shop.

QUALITY HOMES BY . . .



WWW.GREGNESTERHOMES.COM